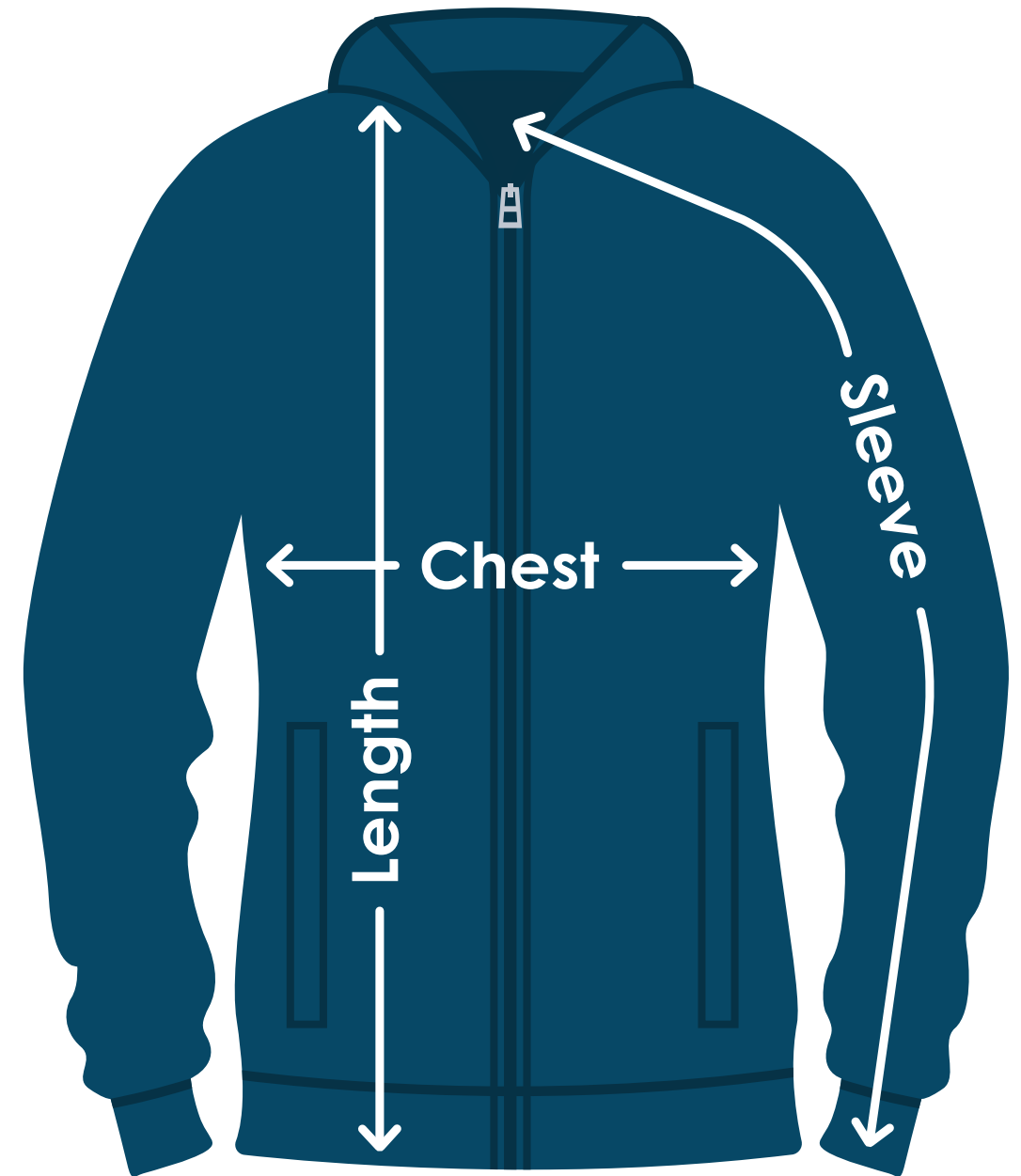


Mercer+Mettle™ Women's Double-Knit Bomber Jacket

TA811 | TA811FD | TA811B | TA811E

Size	Chest	Sleeves	Length
XS (2)	18"	31-1/2"	25-3/4"
S (4/6)	19"	32"	26-1/4"
M (8/10)	20"	32-1/2"	26-3/4"
L (12/14)	21-1/2"	33-1/8"	27-1/4"
XL (16/18)	23"	33-3/4"	27-3/4"
2XL (20/22)	24-1/2"	34-3/8"	28-1/4"
3XL (24/26)	26-1/2"	34-3/4"	28-3/4"
4XL (28/30)	28-1/2"	35-1/8"	29-1/4"



Fit: Ladies'



Measuring Tips

Chest:

Measured across the chest one inch below armhole when laid flat.

Sleeves:

Measured from center back neck, down shoulder to finished sleeve hem.

Length:

Measured from high point of shoulder to finished hem at back.