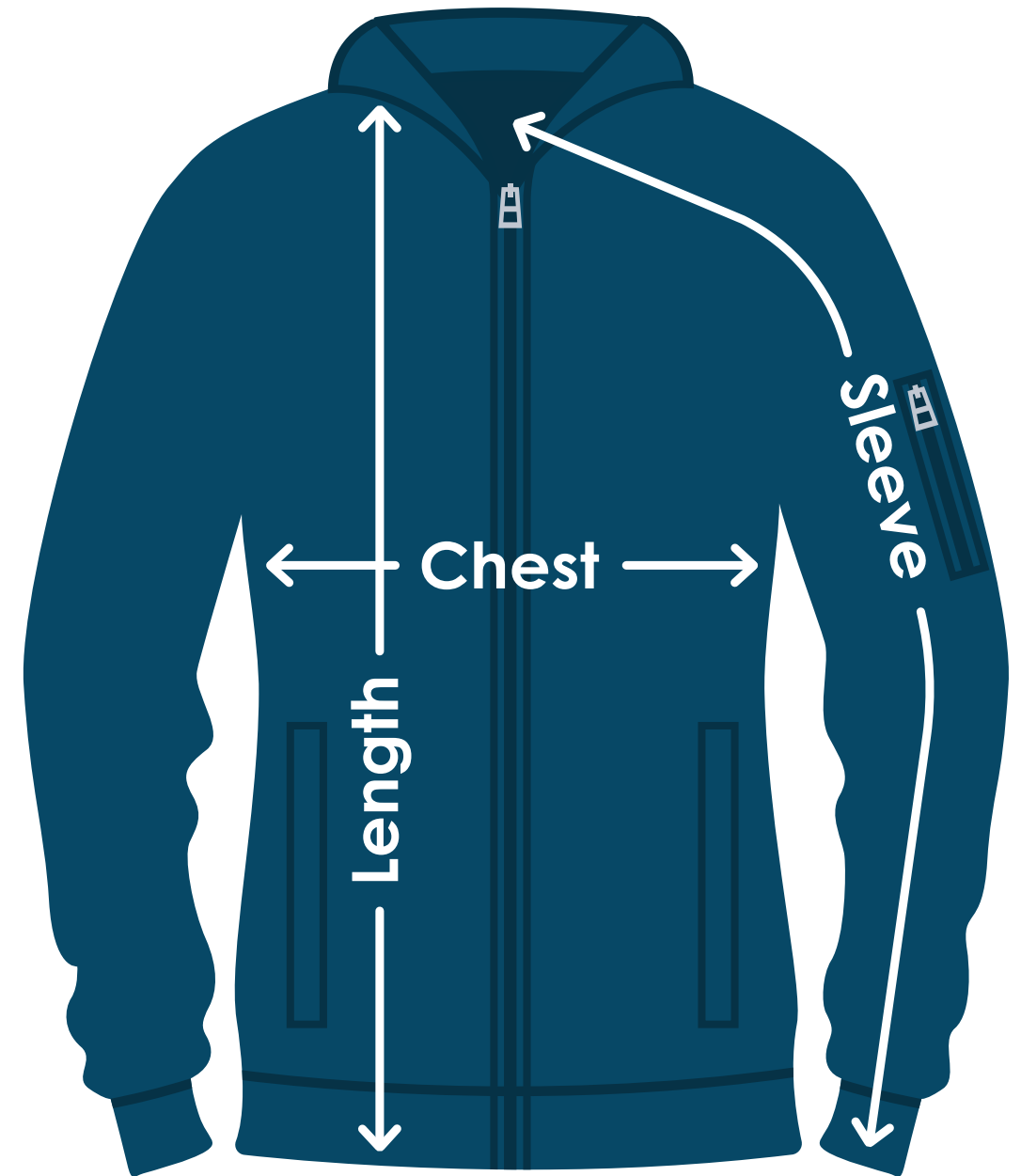


Ladies' Wingover Bomber Jacket

TA786 | TA786FD | TA786B | TA786E

Size	Chest	Sleeves	Length
XS	16-1/2"	30-1/4"	X
S	17-1/2"	30-3/4"	X
M	18-1/2"	31-1/4"	X
L	19-1/2"	32-3/4"	X
XL	20-1/2"	33-3/4"	X
2XL	21-1/2"	34-3/4"	X
3XL	22-1/2"	35-1/4"	X
X	X	X	X



Fit: Ladies'



Measuring Tips

Chest:

Measured across the chest one inch below armhole when laid flat.

Sleeves:

Measured from center back neck, down shoulder to finished sleeve hem.

Length:

Measured from high point of shoulder to finished hem at back.

Sizes:

The measurements featured above include estimated average sizes.