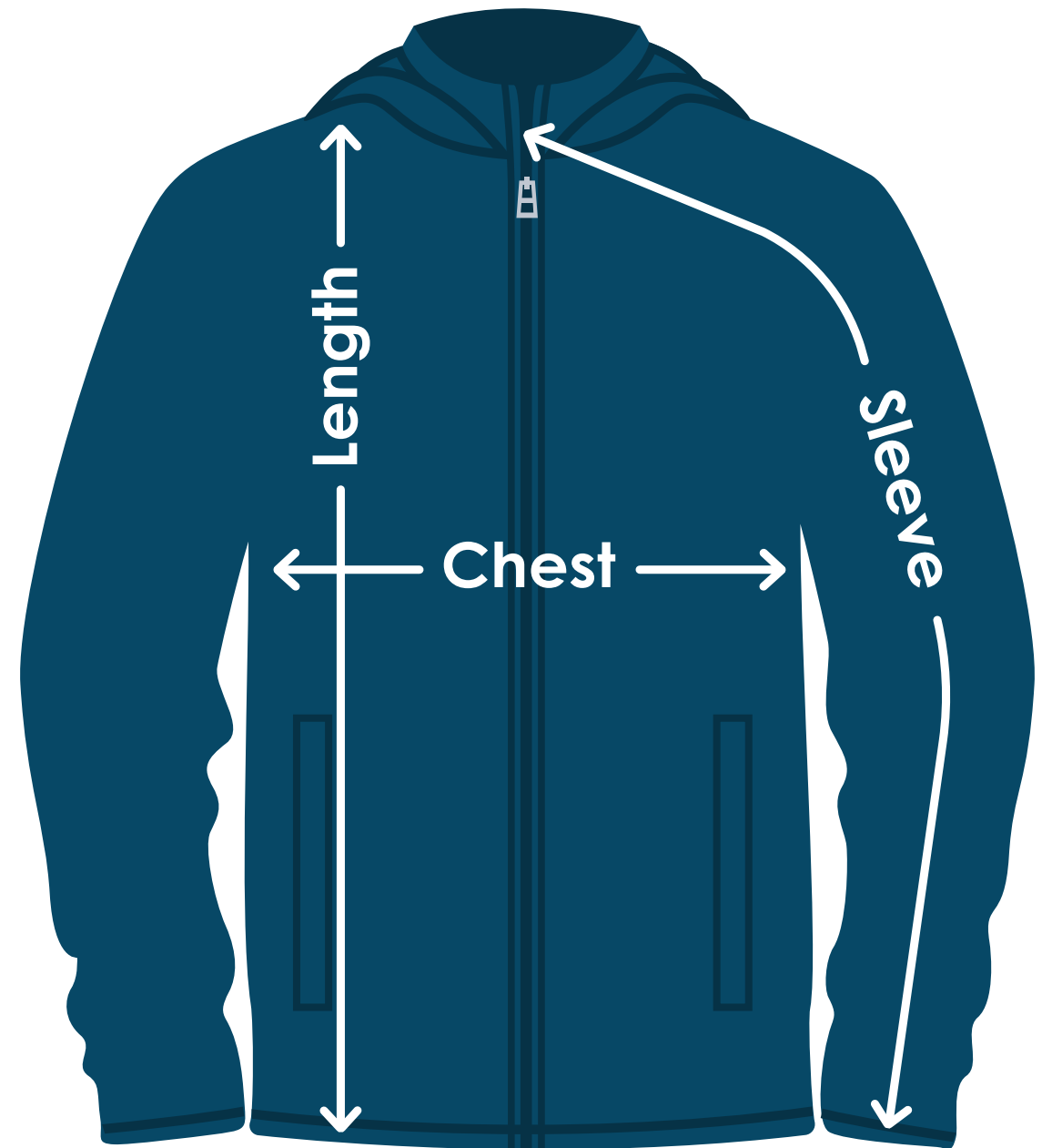


Pack-N-Go® Full-Zip Reflective Jacket

TA768 | TA768FD | TA768B | TA768E

Size	Chest	Sleeves	Length
XS	21"	34-1/2"	27"
S	22"	35"	27-1/2"
M	23"	36"	28-1/2"
L	24"	37"	29-1/2"
XL	25"	37-3/4"	30-1/4"
2XL	28"	38-1/2"	31"
3XL	30"	39-1/4"	31-3/4"
X	X	X	X



Fit: Classic



Measuring Tips

Chest:

Measured across the chest one inch below armhole when laid flat.

Sleeves:

Measured from center back neck, down shoulder to finished sleeve hem.

Length:

Measured from high point of shoulder to finished hem at back.