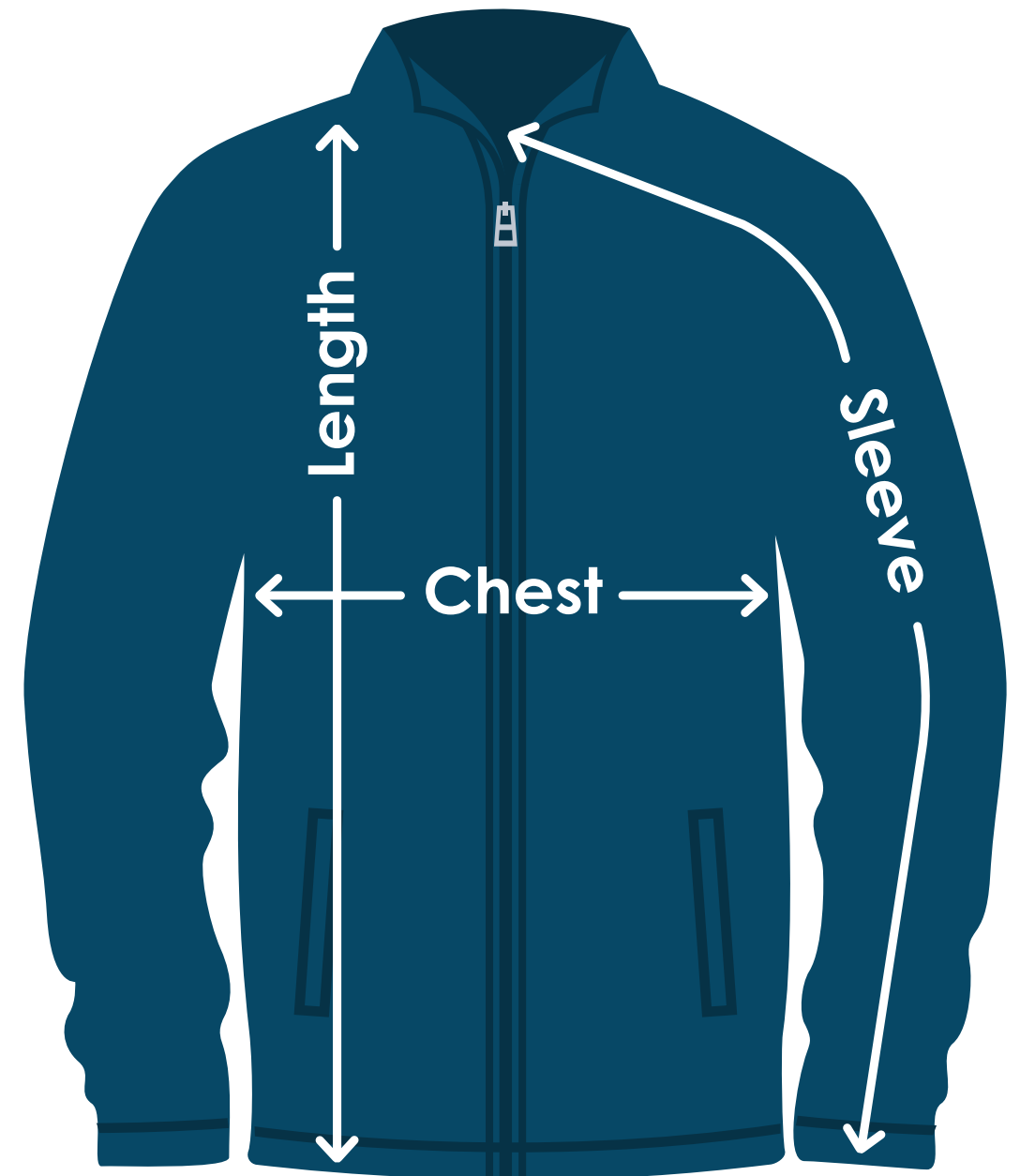


Devon & Jones® Ladies' Newbury Colorblock Melange Fleece Full-Zip Jacket

TA754 | TA754FD | TA754B | TA754E

Size	Chest	Sleeves	Length
XS	17"	30-1/2"	24"
S	18-1/2"	31-1/2"	25"
M	20"	32-1/2"	26"
L	22"	33-1/2"	27"
XL	23-1/2"	34-1/2"	28"
2XL	25-1/2"	35-1/2"	29"
3XL	27-1/2"	36"	30"
X	X	X	X



Fit: Ladies'



Measuring Tips

Chest:

Measured across the chest one inch below armhole when laid flat.

Sleeves:

Measured from center back neck, down shoulder to finished sleeve hem.

Length:

Measured from high point of shoulder to finished hem at back.