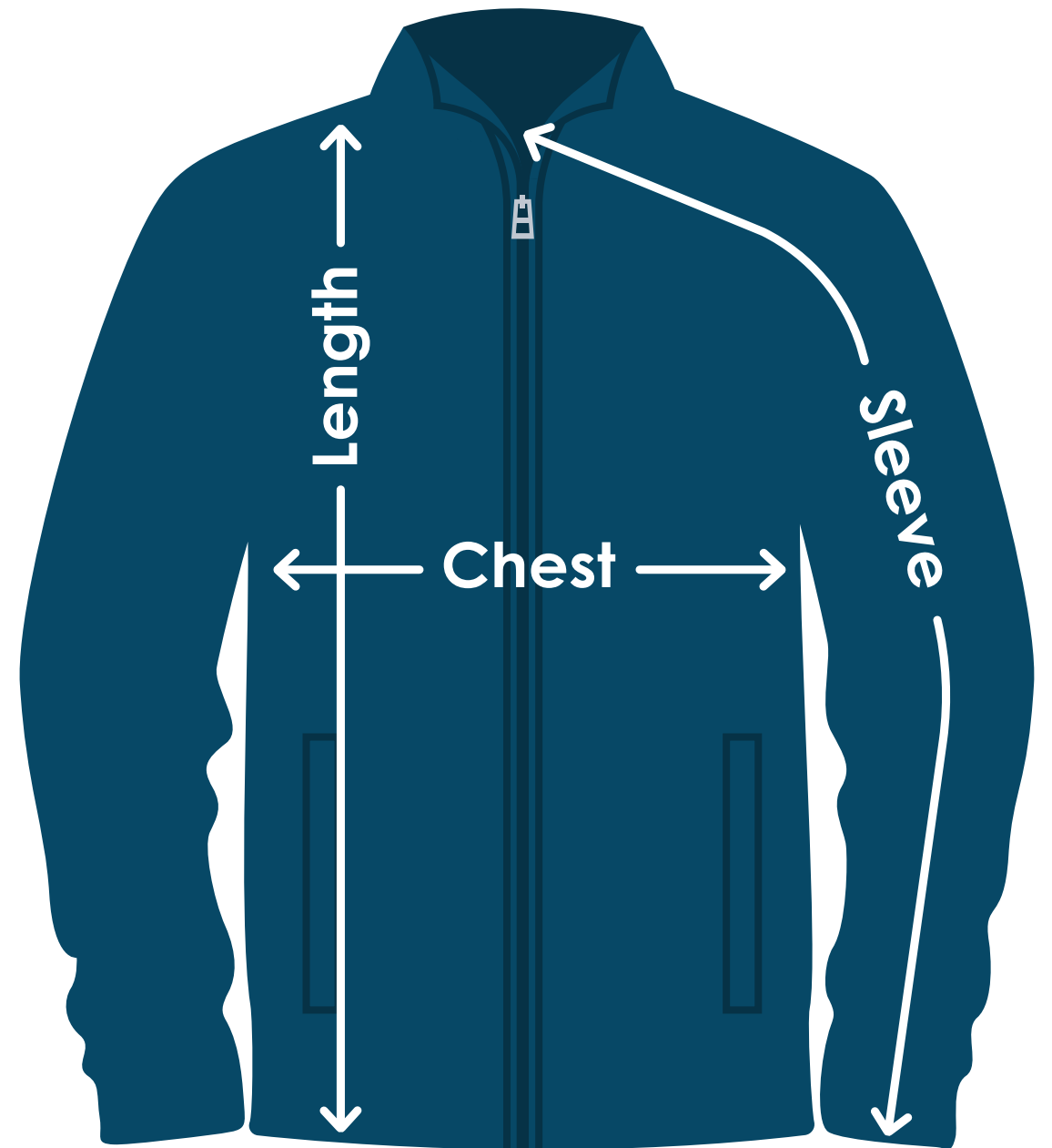


Port Authority® Microfleece Jacket

TA724B | TA724E

Size	Chest	Sleeves	Length
XS	20"	34"	28"
S	21-1/2"	34-3/4"	28-1/2"
M	23"	35-1/2"	29"
L	24-1/2"	36-1/4"	29-1/2"
XL	26"	37"	30-1/2"
2XL	27-1/2"	37-3/4"	31-1/2"
3XL	29-1/2"	38-1/2"	32"
4XL	31-1/2"	39-1/4"	32-1/2"



Fit: Classic



Measuring Tips

Chest:

Measured across the chest one inch below armhole when laid flat.

Sleeves:

Measured from center back neck, down shoulder to finished sleeve hem.

Length:

Measured from high point of shoulder to finished hem at back.