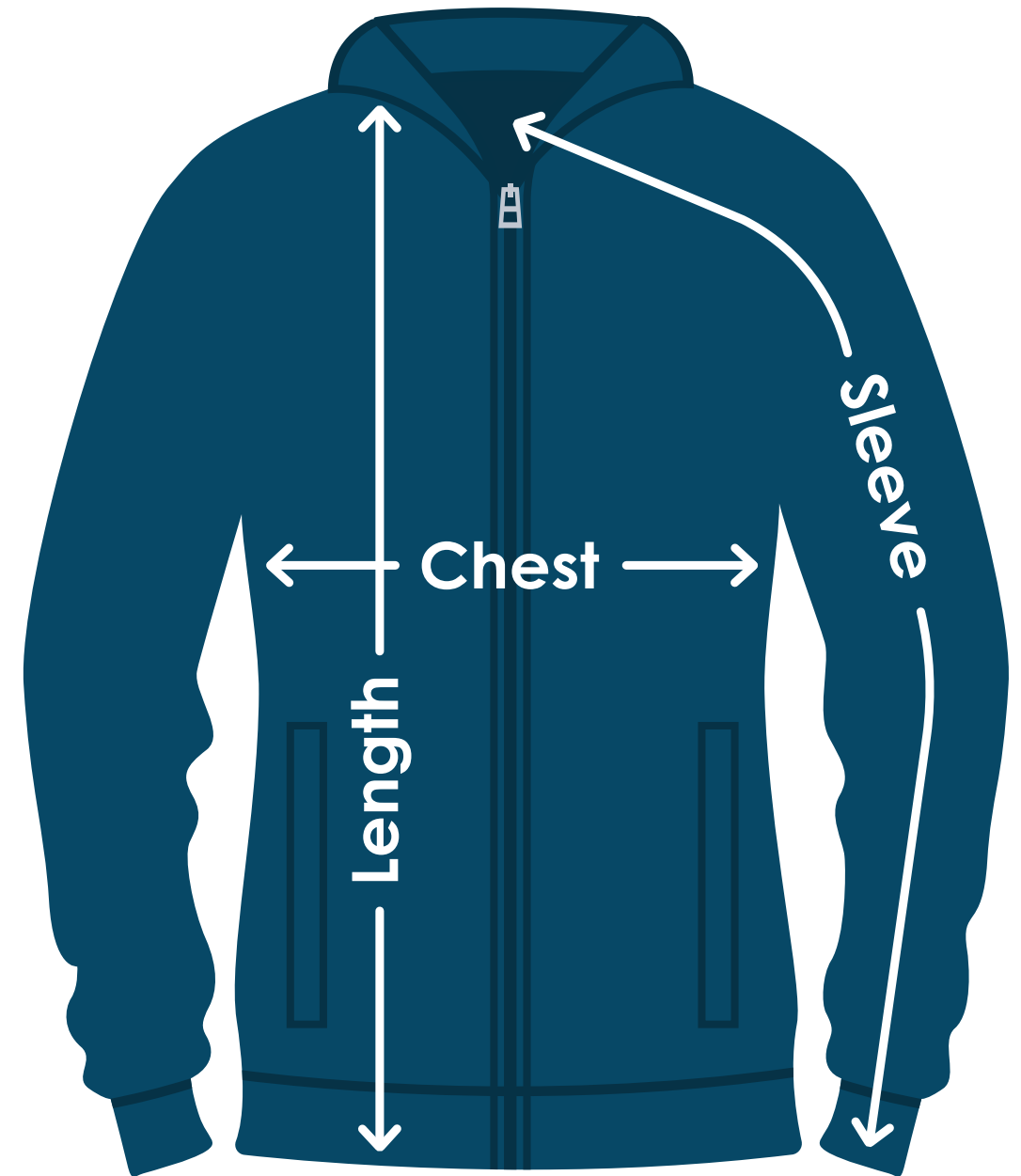


# Sport-Tek® Ladies' Lightweight French Terry Bomber Jacket

TA723 | TA723FD | TA723B | TA723E

Size	Chest	Sleeves	Length
XS	18"	31-3/4"	25"
S	19"	32-1/4"	25-1/2"
M	20"	32-3/4"	26"
L	21-1/2"	33-3/8"	26-1/2"
XL	23"	34"	27"
2XL	24-1/2"	34-5/8"	27-1/2"
3XL	26-1/2"	35"	28"
4XL	28-1/2"	35-3/8"	28-1/2"



Fit: Ladies'



## Measuring Tips

### Chest:

Measured across the chest one inch below armhole when laid flat.

### Sleeves:

Measured from center back neck, down shoulder to finished sleeve hem.

### Length:

Measured from high point of shoulder to finished hem at back.